

WL DIGITAL DOORMAN

Managed Connectivity
to securely connect a
plant to the internet

CONNECTING INDUSTRIAL SITES TO THE INTERNET

Factories and other industrial sites need to evolve towards environments, which are fully connected with the outside world and leverage the advantages of digital services / Industry 4.0. Providing such a remote connectivity raises questions and concerns about security and business continuity. It is essential to have the right tools in place to secure and administer all remote access, such as those of remote experts and IoT platforms.



Worldline

A UNIQUE SOLUTION TO SECURE AND MANAGE REMOTE INDUSTRIAL PLANT ACCESS

With WL Digital Doorman, security sensitive environments, such as factories and other industrial sites can now start benefitting from the new generation of Digital Services offered by suppliers. As a **connectivity hub**, WL Digital Doorman allows the production manager or plant IT to easily & securely manage all remote users and IoT/analytics platforms, while keeping full transparency and control over the accessed data & machines.



THE HIGHEST LEVEL OF SECURITY WITH THE LEAST EFFORT

Have you refused service providers from remotely accessing your machines in the past or have you chosen not to update your machines for a while due to security concerns and the related complexity? Do you have difficulties to imagine how to manage a permanent connection with an IoT platform in the Cloud?

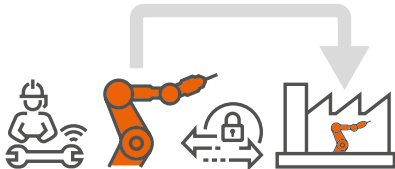
Worldline's Digital Doorman solution is the answer to your unresolved questions!

PROVIDING A RICH SET OF SERVICES TO CONTROL ANY REMOTE CONNECTIVITY

WL Digital Doorman is a unique offering, which enables multiple security enhancing use cases.

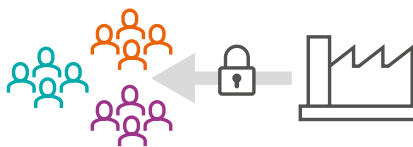
Fast connect

Connecting a new machine and remote Services from a supplier takes 10 minutes



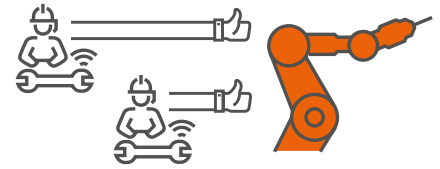
Authorise

Configuration by Local IT Groups & users for each supplier Abstraction of security & network parameters



Collaborate

Seamless collaboration between local maintenance & remote technicians



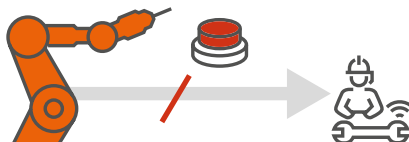
Audit

Audit Trail features provide full insight into data flows and user credentials to local IT



Red Button

Instant blocking by local IT in case of data infringement



Integration

Quickly connect to machines or gateway devices without coding. Flexible API to integrate Enterprise IT & IoT/Data Analytics platforms. Supports among others RDP, TeamViewer, File Update, VNC and HTTPS.



MANAGING SECURITY

State-of-the-art security mechanisms form the foundation of our Codex Connectivity Platform, the core component to WL Digital Doorman. The solution ensures the protection against cybersecurity threats and the business continuity of industrial machines. While doing so, it solves multiple challenges that industrial plants are facing today and even more so in the coming years:



Reducing the complexity of setting up a secure remote tunnels



Allows the management of what data can be accessed by each remote service or user



Reduces the time from enrolling to servicing a machine to as little as 10 minutes



Provides full transparency of actions carried out with the integrated audit trail



Reduces operational costs significantly due to the improved processes



CYBERSECURITY AND DATA PROTECTION ARE MORE IMPORTANT THAN EVER BEFORE



The more IoT will expand within organizations the more it will deserve proper management, especially from a security perspective.

As a payment processor, Worldline is used to providing IT services with the highest security standards. The same payment security expertise is also being used and implemented throughout all of our IoT products. As a platform provider for vehicle and fleet telematics, Worldline understands that information is one of your most valuable assets and so provides our partners with cutting edge technology, while at the same time ensuring the highest level of cybersecurity and data protection with regulation compliant solutions.



About Worldline

Worldline [Euronext: WLN] is the European leader in the payment and transactional services industry. With innovation at the core of its DNA, Worldline's core offerings include pan-European and domestic Commercial Acquiring for physical or online businesses, secured payment transaction processing for banks and financial institutions, as well as transactional services in e-Ticketing and for local and central public agencies. Thanks to a presence in 30 countries, Worldline is the payment partner of choice for merchants, banks, public transport operators, government agencies and industrial companies, delivering cutting-edge digital services. Worldline's activities are organized around three axes: Merchant Services, Financial Services including equensWorldline and Mobility & e-Transactional Services. Worldline employs circa 11,000 people worldwide, with estimated pro forma revenue of circa 2.3 billion euros on a yearly basis. Worldline is an Atos company.
worldline.com

For further information
infoWL@worldline.com

