



OUR NEW DASHBOARD STREAMLINES YOUR PAYMENT OPERATIONS

Better manage your day-to-day payment operations with our new user-friendly Merchant Portal dashboard.

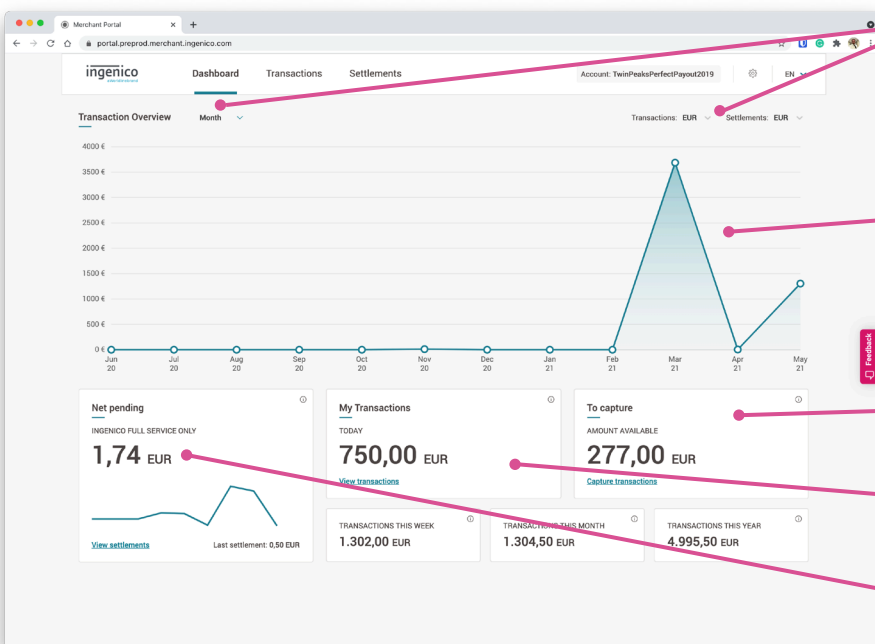
The (WCAG compliant) interface provides a clear overview of your performance and simplifies task management, including refunds and captures, to help streamline your payment operations.

The intuitive layout reduces the need for technical involvement for users to complete a wide range of tasks more quickly.



watch our
video demo

IMPROVED DASHBOARD



Sort by timeline and currency

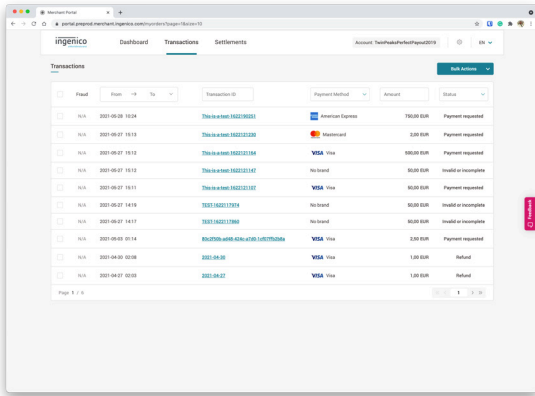
Transactions over time

Transactions to capture

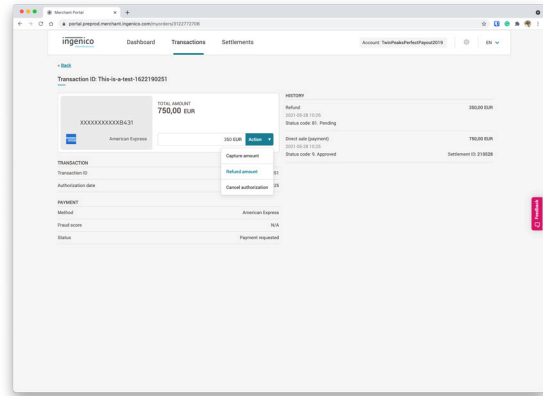
Today's transactions

Net pending

TRANSACTIONS

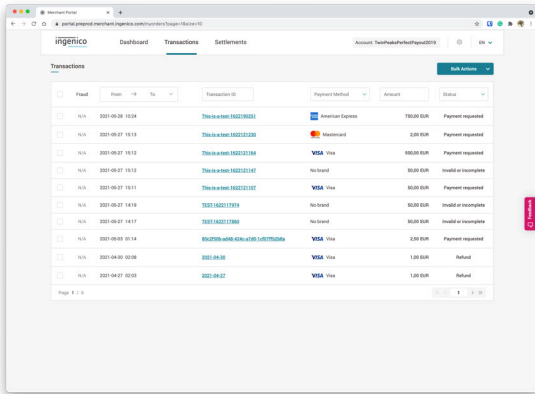


- ✔ Quick look at your transactions
- ✔ Search and filter
- ✔ View transaction details

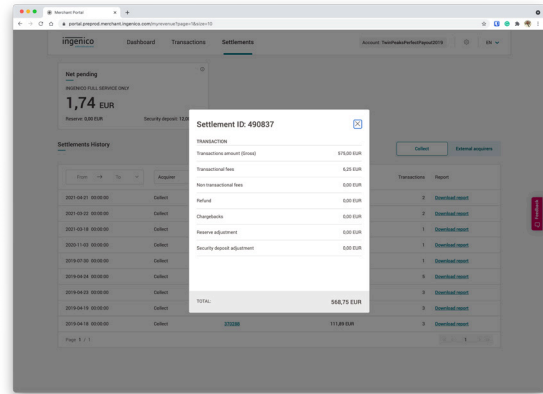


- ✔ Perform tasks such as refunds and captures quickly and easily

SETTLEMENTS

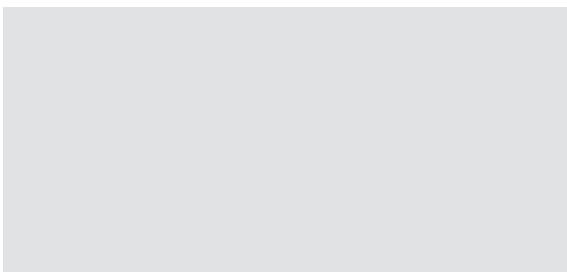


- ✔ Check revenues and settlements
- ✔ Search and filter



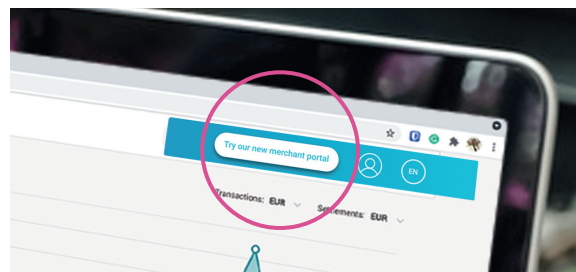
- ✔ View settlement details

STILL NEED ACCESS TO THE OLD PORTAL?



For more detail and development functions, you can still switch to the old dashboard with one click.

READY TO GET STARTED?



Simply login to the Portal Back Office as normal and click the button

**DIGITAL PAYMENTS
FOR A TRUSTED WORLD**

Worldline

Worldline is the European leader in the payments and transactional services industry and #4 player worldwide. Worldline provides its clients with sustainable, trusted and secure solutions across the payment value chain. © Worldline 2021